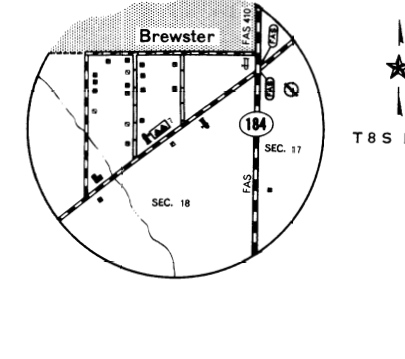
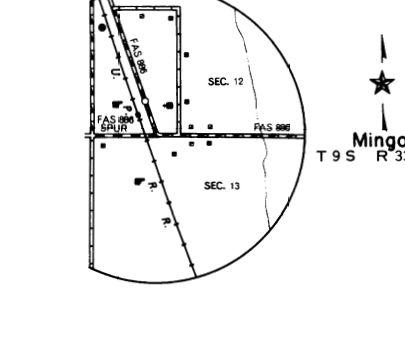


Levont
T 8 S R 35 W



Brewster
T 8 S R 36 W



Mingo
T 9 S R 33 W

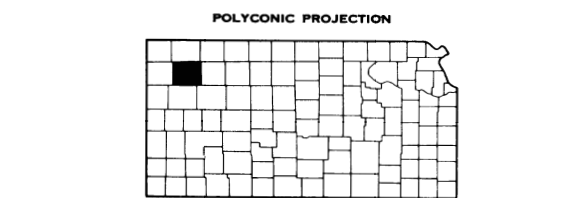
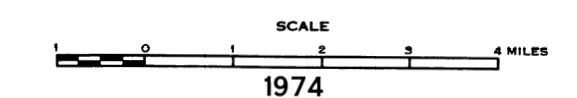


ENLARGEMENT SCALE
MILE

ROADS AND ROADWAY FEATURES		CONSERVATION AND RECREATION	
PRIMITIVE ROAD (TYPE A)	UNGRADED AND DRAINED ROAD (TYPE B)	PICNIC GROUND	PLAYGROUND, BALL FIELD, ETC.
GRADED AND DRAINED ROAD (TYPE C)	GRAVEL OR STONE ROAD (TYPE D)	BATHING BEACH OR SWIMMING POOL	SCENIC SITE
GRAVEL OR STONE ROAD WITH STABILIZED SURFACE (TYPE E)	BITUMINOUS ROAD-LOW TYPE (TYPE F)	CAMP SITE, NO PERMANENCE ITEMS OR TRAILER PARKING	CAMP SITE, PERMANENT ITEMS WITH BUILDINGS
DIVIDED HIGHWAY	HIGHWAY WITH FULL CONTROL OF ACCESS	CAMP ON LOGS, PROTECTED WITH BUILDINGS	SMALL PARK
SIDE ROADS AND STREETS IN UNINCORPORATED URBAN COMPACTS AND EXTENSIONS OF LOCAL ROADS WITHIN MUNICIPALITIES	4 LANE UNDIVIDED HIGHWAY	FISH HATCHERY	BIRD WATCHERY
PROJECTED ROAD		GAME PRESERVE	GAME FARM
		RIFLE CLUB	GOLF GROUND OR COUNTRY CLUB
		YACHT CLUB	POLO GROUNDS
		AMUSEMENT PARK OR HALL	RIDING ACADEMY
		FAIR GROUND, RACE COURSE, SPEEDWAY	YACHT CLUB
			AMUSEMENT PARK OR HALL
			FAIR GROUND, RACE COURSE, SPEEDWAY
			DRIVE-IN THEATRE
			FARM UNITS, DWELLINGS, ETC.
			FARM UNIT
			DWELLING
			ROWS OR GROUPS OF DWELLINGS CLOSELY SPACED
			COMBINED DWELLING AND STORE
			DWELLING AND POST OFFICE
			DWELLING, BUSINESS AND FILLING STATION
			TENANT HOUSE
			SEASONAL OR SUMMER COLONY DWELLING
			HOTEL, INN
			CHURCH OR OTHER RELIGIOUS INSTITUTION
			CHURCH AND SCHOOL (JOINT USE)
			CEMETERY
			CHURCH WITH CEMETERY ADJACENT
			FRESH AIR FARM OR REST HOME
			WELL
			STATE PORT OF ENTRY OR WEIGHT STATION
			GROUP OF MISCELLANEOUS CULTURAL FEATURES CLOSELY SPACED
			RAILROAD STATION
			INDUSTRIAL
			STORE OR SMALL BUSINESS ESTABLISHMENT
			BUSINESS AND POST OFFICE
			BUSINESS, FILLING STATION, AND POST OFFICE
			FACTORY OR INDUSTRIAL PLANT
			MINESHAFT OR DRIFT (AND ROAD)
			OIL OR GAS WELL
			OIL OR GAS FIELD
			OIL TANK
			GAS TANK
			GROUP OF STORAGE TANKS (OIL OR GAS)
			FILLING STATION, NOT CONNECTED WITH OTHER BUILDINGS
			PUMPING STATION (OIL OR GAS)
			GAUGING OR PUMPING STATION (GENERAL)
			VALVE HOUSE
			SEASONAL INDUSTRY (SEMI-ANNUAL OR SMALL SCALE)
			MILK, BUTTER, CREAMERY OR CHEESE FACTORY
			FRUIT OR NUT ORCHARD
			FRUIT OR PRODUCE PACKING HOUSE
			ROAD STAND FARM PRODUCTS SALES
			WAREHOUSE-GENERAL, OR OTHERWISE USE STATE OR
			GRAIN ELEVATOR
			GROUP OF GRAIN STORAGE BINS
			GREENHOUSE
			NURSERY
			STOCK YARD-LOADING PEN OR CORRAL
			STOCK PEN AT RAILROAD SIDING (GENERAL)
			GRAVELY
			KILN OR OVEN (LIME, CLAY, BRICK, ETC.)
			EDUCATIONAL AND CORRECTIONAL INSTITUTIONS
			SCHOOLHOUSE
			CONSOLIDATED OR LARGE SCHOOL
			TOWN HALL, GRANGE, OR COMMUNITY HALL
			AGRICULTURAL EXPERIMENT HALL
			COUNTY FARM
			CORRECTIONAL INSTITUTION
			PUBLIC SERVICE FACILITIES
			POST OFFICE
			HIGHWAY GARAGE
			FIRE ENGINE GARAGE
			GARAGE OR RUBBISH DUMP
			SEWAGE DISPOSAL PLANT
			AUTO SALVAGE YARD
			TRANSFORMER
			POWER PLANT
			POWER SUBSTATION
			BOOSTER STATION
			WATER SUPPLY, STAND PIPE, OR TANK
			RADIO STATION, METEOROLOGICAL
			RADIO RANGE STATION
			US WEATHER STATION
			MISCELLANEOUS
			FORT, ARMY CAMP, BARRACKS, OR OTHER
			MILITARY POST
			TRIANGULATION STATION
			BENCH MARK, WITH ELEVATION
			NATURAL FEATURES
			PROMINENT ELEVATION, WITH NAME
			SINK OR DEPRESSION

GENERAL HIGHWAY MAP THOMAS COUNTY KANSAS

PREPARED BY THE
STATE HIGHWAY COMMISSION OF KANSAS
DEPARTMENT OF PLANNING AND DEVELOPMENT
IN COOPERATION WITH THE
U. S. DEPARTMENT OF TRANSPORTATION
FEDERAL HIGHWAY ADMINISTRATION



KEY TO COUNTIES