

**IMMEDIATE RELEASE**  
**July 30, 2020**

**For more information:**

Kelly Kultala

(785) 207-0715

[Kelly.Kultala@ks.gov](mailto:Kelly.Kultala@ks.gov)

**I-70/Turner Diagonal Interchange closed this weekend**

As part of the Turner Diagonal interchange reconfiguration there will be some full lane and ramp closures for the construction of the diverging diamond interchange at I-70 and the Turner Diagonal Freeway in Wyandotte County.

Detours routes will be marked. Traffic on all these projects will be diverted using lane and ramp closures, signage and traffic cones.

**West ramps –**

The following ramps are currently closed until September 8. The ramps include:

- Ramp from eastbound I-70 to southbound Turner Diagonal Freeway,
- Ramp from eastbound I-70 to northbound Turner Diagonal Freeway,
- Ramp from northbound Turner Diagonal to westbound I-70,
- Ramp from southbound Turner Diagonal to westbound I-70.

**East ramps and Turner Diagonal Freeway –**

Starting Friday, July 31, weather permitting, the following ramps and lanes will be closed until September 8:

Closed at 5 a.m. Friday:

- Ramp from southbound Turner Diagonal Freeway to eastbound I-70,
- Ramp from northbound Turner Diagonal Freeway to eastbound I-70,
- Ramp from westbound I-70 to southbound Turner Diagonal Freeway,
- Ramp from westbound I-70 to northbound College Parkway,

- Turner Diagonal Freeway from State Avenue to Riverview Avenue.

For barrier work, closed from Friday, 8 a.m. to 3 p.m.:

- Right lane eastbound I-70 at Turner Diagonal Freeway,
- Right lane westbound I-70 Turner Diagonal Freeway.

**Full I-70 lane and ramp closures–**

**Also, Friday, July 31 from 10 p.m. to 6 a.m. Monday, August 3 there will be a full closure of both eastbound and westbound I-70, from I-435 to I-635 for bridge removal and pipe placement at the Turner Diagonal Freeway. The detour route will go north to use State Avenue.**

Ramps closed Friday, 9 p.m. to 6 a.m., Monday:

- Ramp from northbound I-435 to eastbound I-70,
- Ramp from southbound I-435 to eastbound I-70,
- Ramp from 78<sup>th</sup> Street to eastbound I-70,
- Ramp from northbound I-635 to westbound I-70,
- Ramp from southbound I-635 to westbound I-70,
- Ramp from 57<sup>th</sup> Street to westbound I-70.

KDOT urges all motorists to be alert and obey the warning signs when approaching and driving through a highway work zone. To stay aware of all road construction projects across Kansas go to [www.kandrive.org](http://www.kandrive.org) or call 5-1-1. Drive safely and always wear your seat belt.

# EAST RAMPS DETOUR MAP

The Turner Diagonal Interchange and Turner Diagonal Highway will be fully closed for approximately one and a half months. The East Ramps will also be closed for approximately one and a half months. The detour routes will be marked.

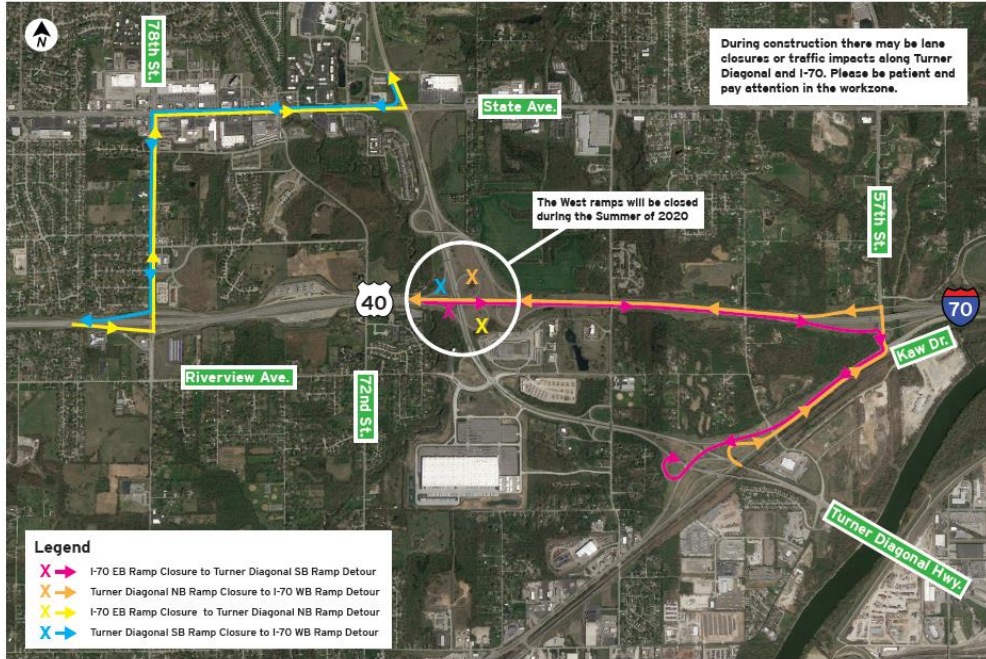


As of April 2020

TURNER DIAGONAL

# WEST RAMPS DETOUR MAP

The Turner Diagonal Interchange and Turner Diagonal Highway will be fully closed for approximately one and a half months. The West Ramps will be closed for approximately two months. There will be additional short term closures throughout the project. The detour routes will be marked.



TURNER DIAGONAL

###

This information can be made available in alternative accessible formats upon request. For information about obtaining an alternative format, contact the KDOT Office of Public Affairs, 700 SW Harrison St., 2<sup>nd</sup> Fl West, Topeka, KS 66603-3754 or phone 785-296-3585 (Voice)/Hearing Impaired – 711.

Click below to connect to KDOT's Social Networks:

