

Kansas City Metro Office
1290 S. Enterprise
Olathe, KS 66061-5355



phone: 913-942-3100
fax: 913-782-5914
www.ksdot.org

Julie Lorenz, Secretary

Laura Kelly, Governor

IMMEDIATE RELEASE
June 22, 2020

For more information:

Kelly Kultala
(785) 207-0715
Kelly.Kultala@ks.gov

Ramp and lane closures in Jefferson and Wyandotte counties

Ramp and lane closures are scheduled in Jefferson and Wyandotte counties, Tuesday, June 23, according to the Kansas Department of Transportation, weather permitting. Traffic on all these projects will be diverted using mobile lane closures, signage and traffic cones.

Jefferson County –

For pavement overlay, the closures include:

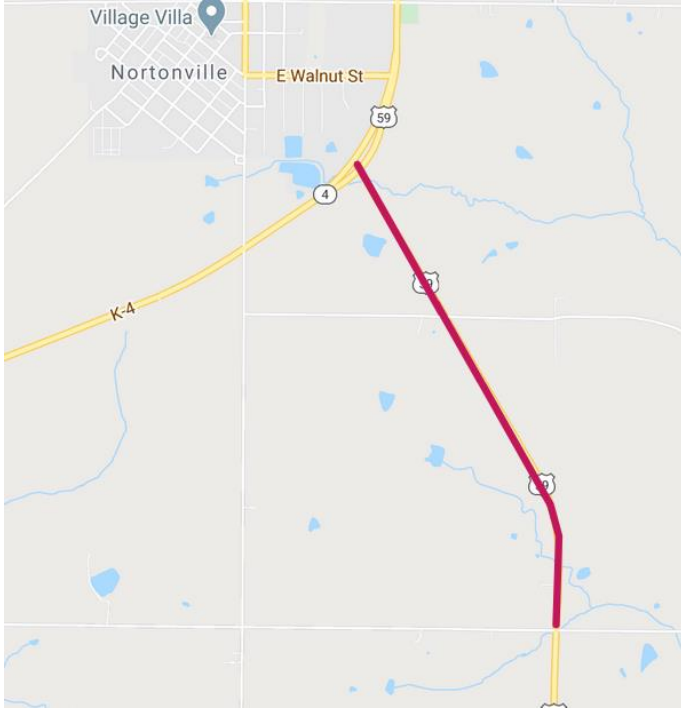
- Single lane on northbound U.S. 59 from 190th Street/Rogers Road to K-4, south of Nortonville. Traffic control will include a flagger and pilot car operation, from 6 a.m. to 7 p.m. on Tuesday, June 23.

Wyandotte County –

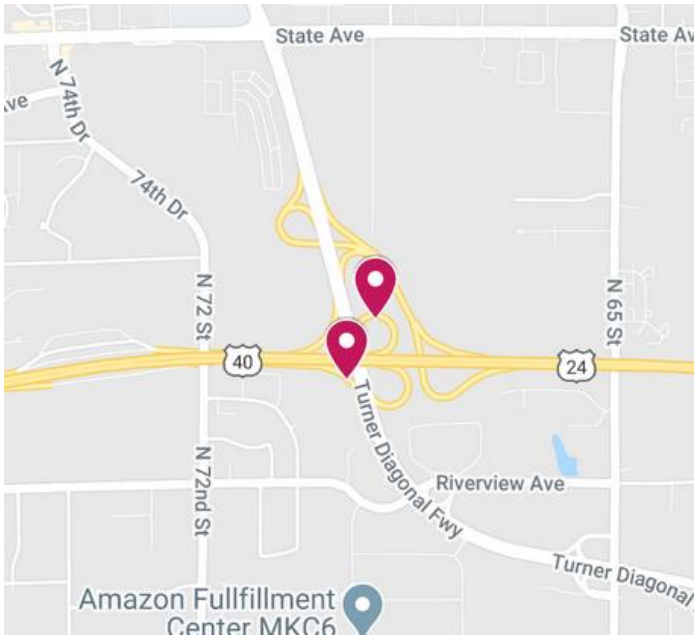
For grading work, the closures include:

- The following ramps, Southbound Turner Diagonal Freeway to westbound I-70, and eastbound I-70 to southbound Turner Diagonal Freeway. Work will occur from 8 a.m. to 3 p.m., Tuesday, June 23.

KDOT urges all motorists to be alert and obey the warning signs when approaching and driving through a highway work zone. To stay aware of all road construction projects across Kansas go to www.kandrive.org or call 5-1-1. Drive safely and always wear your seat belt.



Jefferson County



Wyandotte County

###

This information can be made available in alternative accessible formats upon request. For information about obtaining an alternative format, contact the KDOT Office of Public Affairs, 700 SW Harrison St., 2nd Fl West, Topeka, KS 66603-3754 or phone 785-296-3585 (Voice)/Hearing Impaired – 711.

Click below to connect to KDOT's Social Networks:

