

Kansas City Metro Office  
1290 S. Enterprise  
Olathe, KS 66061-5355



phone: 913-942-3100  
fax: 913-782-5914  
www.ksdot.org

Julie Lorenz, Secretary

Laura Kelly, Governor

## **IMMEDIATE RELEASE**

**July 17, 2020**

### **For more information:**

Kelly Kultala  
(785) 207-0715  
Kelly.Kultala@ks.gov

## **Turner Diagonal Freeway ramp and lane closures**

As part of the Turner Diagonal Interchange reconfiguration additional ramp and lane closures are scheduled for Friday, July 31, at I-70 and the Turner Diagonal Freeway, weather permitting.

The following ramps and lanes will be closed until September 8, 2020. Detours routes will be marked and maps are below.

### **East Ramps and Turner Diagonal Freeway:**

The ramps and road closures include:

- Southbound Turner Diagonal Freeway to eastbound I-70,
- Northbound Turner Diagonal Freeway to eastbound I-70,
- Turner Diagonal Freeway from State Avenue to Riverview Avenue.

### **I-70 weekend full closure:**

In addition, Friday, July 31 from 10 p.m. to 6 a.m. Monday, August 2, there will be a full closure of both eastbound and westbound I-70 at Turner Diagonal Freeway for bridge removal and pipe placement. The detour route includes I-435, I-635, & State Avenue.

### **West ramps already closed:**

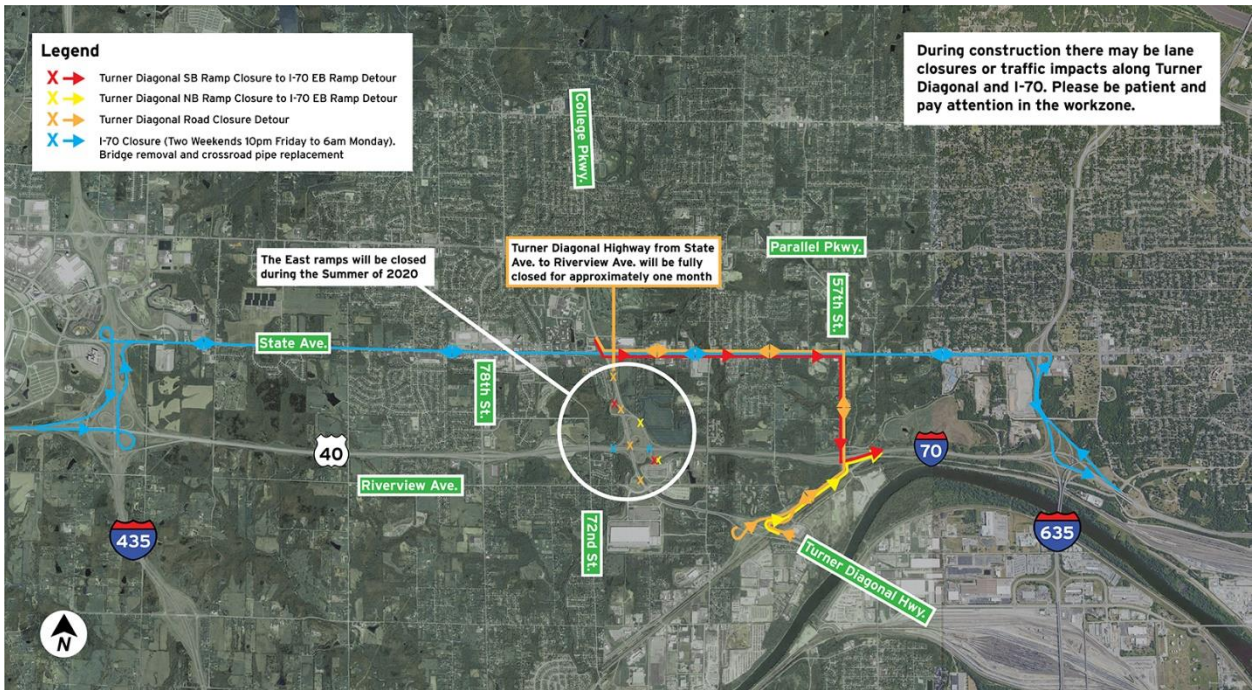
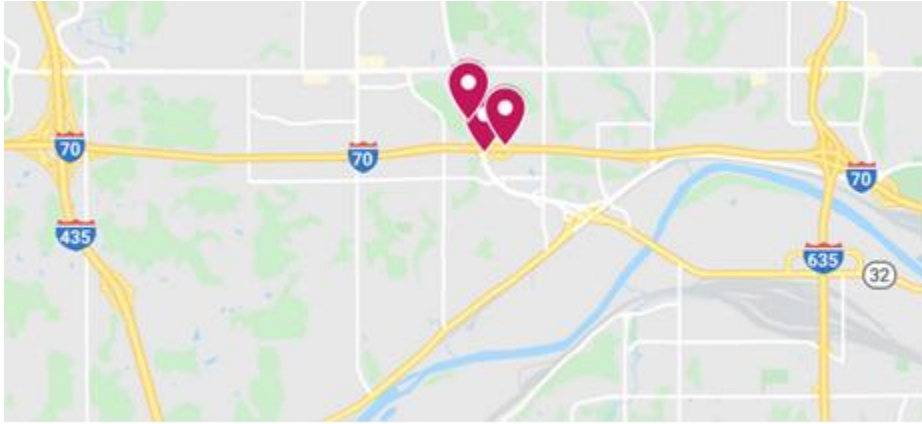
The west ramps were closed Friday, July 10 and will be closed until September 8, 2020.

The ramps include:

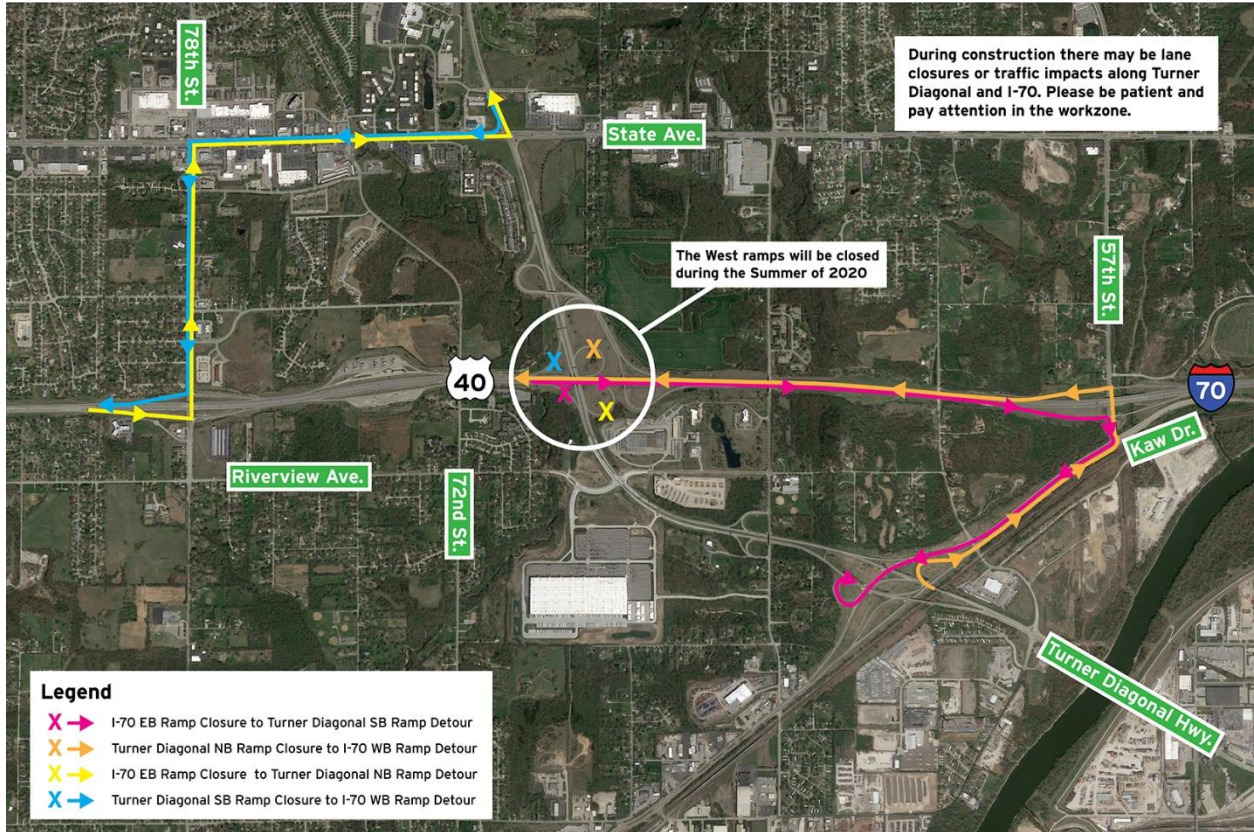
- Eastbound I-70 to southbound Turner Diagonal Freeway,
- Eastbound I-70 to northbound Turner Diagonal Freeway,
- Northbound Turner Diagonal to westbound I-70,
- Southbound Turner Diagonal to westbound I-70.

KDOT urges all motorists to be alert and obey the warning signs when approaching and driving through a highway work zone. To stay aware of all road construction projects

across Kansas go to [www.kandrive.org](http://www.kandrive.org) or call 5-1-1. Drive safely and always wear your seat belt.



East ramp detour map



West ramp detour map

###

This information can be made available in alternative accessible formats upon request. For information about obtaining an alternative format, contact the KDOT Office of Public Affairs, 700 SW Harrison St., 2<sup>nd</sup> Fl West, Topeka, KS 66603-3754 or phone 785-296-3585 (Voice)/Hearing Impaired – 711.

Click below to connect to KDOT's Social Networks:

