

Kansas City Metro Office
1290 S. Enterprise
Olathe, KS 66061-5355



phone: 913-942-3100
fax: 913-782-5914
www.ksdot.org

Julie Lorenz, Secretary

Laura Kelly, Governor

IMMEDIATE RELEASE
July 8, 2020

For more information:

Kelly Kultala
(785) 207-0715
Kelly.Kultala@ks.gov

Turner Diagonal Interchange full closures to begin July 10

As part of the Turner Diagonal interchange reconfiguration there will be some full lane and ramp closures for the construction of the diverging diamond interchange at I-70 and the Turner Diagonal Freeway in Wyandotte County.

Detours routes will be marked. Maps are below. Traffic on all these projects will be diverted using lane and ramp closures, signage and traffic cones.

West ramps –

Starting Friday, July 10, weather permitting, the following ramps will be closed until September 8. The ramps include:

- The ramp from eastbound I-70 to southbound Turner Diagonal Freeway,
- The ramp from eastbound I-70 to northbound Turner Diagonal Freeway,
- The ramp from northbound Turner Diagonal to westbound I-70,
- The ramp from southbound Turner Diagonal to westbound I-70.

East ramps and Turner Diagonal Freeway –

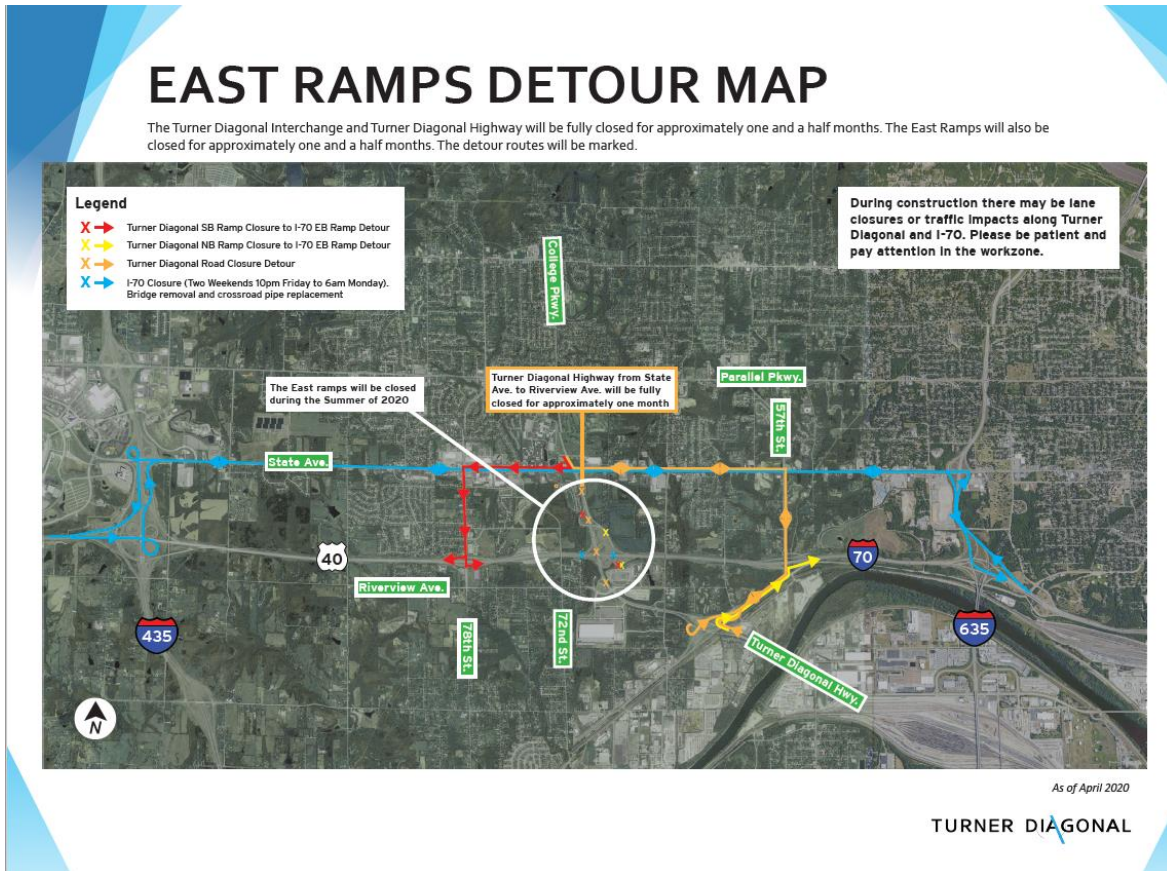
Starting Friday, July 31, weather permitting, the following ramps and lanes will be closed until September 8. The ramps and lane closures include:

- The ramp from southbound Turner Diagonal Freeway to eastbound I-70,
- The ramp from northbound Turner Diagonal Freeway to eastbound I-70,
- Turner Diagonal Freeway from State Avenue to Riverview Avenue.

Full I-70 lane closure –

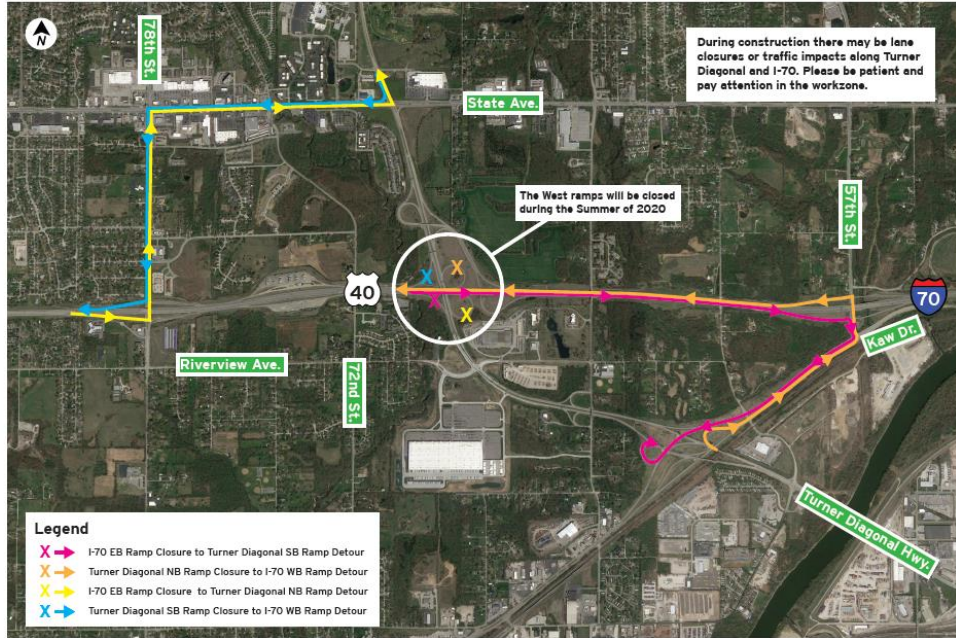
Also, Friday, July 31 from 10 p.m. to 6 a.m. Monday, August 2 there will be a full closure of both eastbound and westbound I-70 at Turner Diagonal Freeway for bridge removal and pipe placement. The detour route will go north to use State Avenue.

KDOT urges all motorists to be alert and obey the warning signs when approaching and driving through a highway work zone. To stay aware of all road construction projects across Kansas go to www.kandrive.org or call 5-1-1. Drive safely and always wear your seat belt.



WEST RAMPS DETOUR MAP

The Turner Diagonal Interchange and Turner Diagonal Highway will be fully closed for approximately one and a half months. The West Ramps will be closed for approximately two months. There will be additional short term closures throughout the project. The detour routes will be marked.



TURNER DIAGONAL

###

This information can be made available in alternative accessible formats upon request. For information about obtaining an alternative format, contact the KDOT Office of Public Affairs, 700 SW Harrison St., 2nd Fl West, Topeka, KS 66603-3754 or phone 785-296-3585 (Voice)/Hearing Impaired – 711.

Click below to connect to KDOT's Social Networks:

